



ELIET DZC 550

THE REJUVENATING CURE FOR YOUR LAWN

Is your lawn looking a little lame? Now you can transform a tired lawn into a vigorous expanse of vital green within three weeks. This rejuvenating cure requires you to overseed your worn-out lawn.

Overseeding is the process of injecting new seed into your lawn. It's been used on golf courses and sports pitches for decades. A clear advantage of overseeding is that the lawn remains resistant to disease and drought. It also maintains the diversity of grass types.

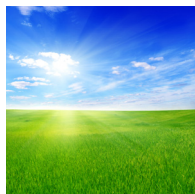
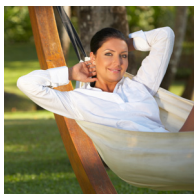
ELIET OVERSEEDER

ELIET developed a machine that does this for you, and it costs next to nothing. This precision overseeder injects fresh grass into your lawn just where it's needed. Without wasting seed. Any signs of the

treatment will disappear within a few days. So you don't need to stop using or mowing your lawn for a period of time. The young grass will give your lawn a vital appearance after just a few weeks.

PROACTIVE LAWN MANAGEMENT

It's advisable to overseed your lawn every year. That will nip moss and weed growth in the bud and keep your lawn in good health. And a healthy lawn requires less maintenance of course. So you'll always earn back your investment.



4

ACTIVITIES IN ONE



SOWING

The 8.8 gallon seed hopper is located immediately behind the collection channel. A mill in the seed hopper ensures a continuous and uniform flow of grass seed. The distribution openings are connected to discharge channels that guide the seed over the grooves. The narrow nozzles distribute the seed unhindered into the clean grooves.

COLLECTING DIRT

The smaller version of the existing overseeder also works by the principle of cutting grooves to implant new seeds into the ground. On the DZC 750 an auger in the collection channel discharges the dirt to the side of the machine. The blades of the new DZC 550 throw the dirt into a collection hopper on the front of the machine so the user doesn't have to collect the dirt anymore.

ROLLING

The rollers on which the overseeder moves will eventually very gently press the groove on the surface without compacting again the substrate that has just been cut open. This places the grass seed in a cocoon, so that it is protected and allowed to germinate.

CUTTING THE GROOVES

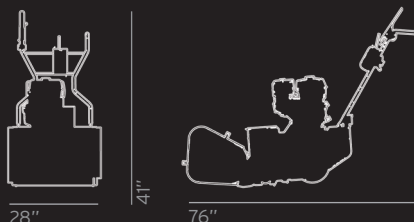
The driven blade discs are inserted into the soil up to a working depth of 0.8" and will cut 0.12" wide grooves into the soil. Due to the direction of rotation of the rotor (contrary to the direction of travel) all earth, grass roots and other material that the blade edges encounter are thrown away. The Eliet DZC 550 is, therefore, successful in cutting pure grooves with a spacing of 1.08".

PERFORMANCE

Drive	Honda GX270
Power	9HP
Operation width	22 inch
Number of blades	18
Permanently Sharp Blades™	Yes
Blade space	1"
Depth adjustment	0 to -1,6"
Seed hopper capacity	9 gallon
Capacity collection hopper	21 gallon

DESIGN

Dimensions (L x W x H)	76" x 28" x 41"
Weight	532 pounds



ELIET®

ELIET Europe nv
 Diesveldstraat 2
 8553 Otegem, Belgium
 Phone +32 (0) 56 77 70 88
 Fax +32 (0) 56 77 52 13

www.elieta.eu